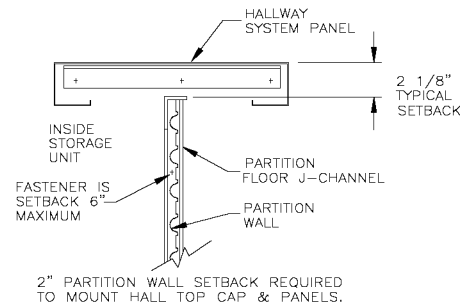
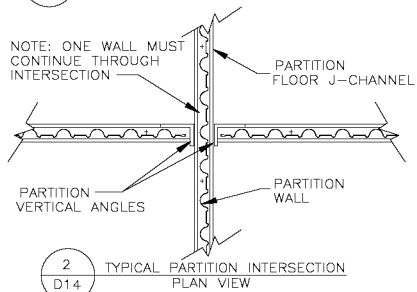


- IMPORTANT NOTES**
- ALL INSTALLATIONS WITH CEILING ATTACHMENT OR SECURITY MESH REQUIRE CAP ANGLE TO BE PLACED AT TOP OF SHEET AS SHOWN BELOW. SOME OTHER INSTALLATIONS MAY ALLOW FOR CAP ANGLE TO BE PLACED LOWER ON SHEET. (QUESTIONS? CALL USDOOR DRAFTING DEPT.)
 - FIELD NOTCHING (CUTTING OF PARTITION SHEETS) MAY BE REQUIRED AT ZEE PURLINS OR BEAMS ON SOME PROJECTS.
 - SOME STORAGE UNIT DEPTHS CAN NOT BE MADE BY OVERLAPPING LAST PARTITION SHEET; THESE UNITS MAY REQUIRE LAST SHEET TO BE FIELD-CUT BY INSTALLER.
 - BOTTOM CHANNELS & PARTITION SHEETS MUST BE 'SETBACK' 2 1/8" TO ALLOW FOR TOP CAP, MOUNTING ANGLES & HALLWAY PANELS. PLEASE SEE DETAIL 1 ON THIS DRAWING.



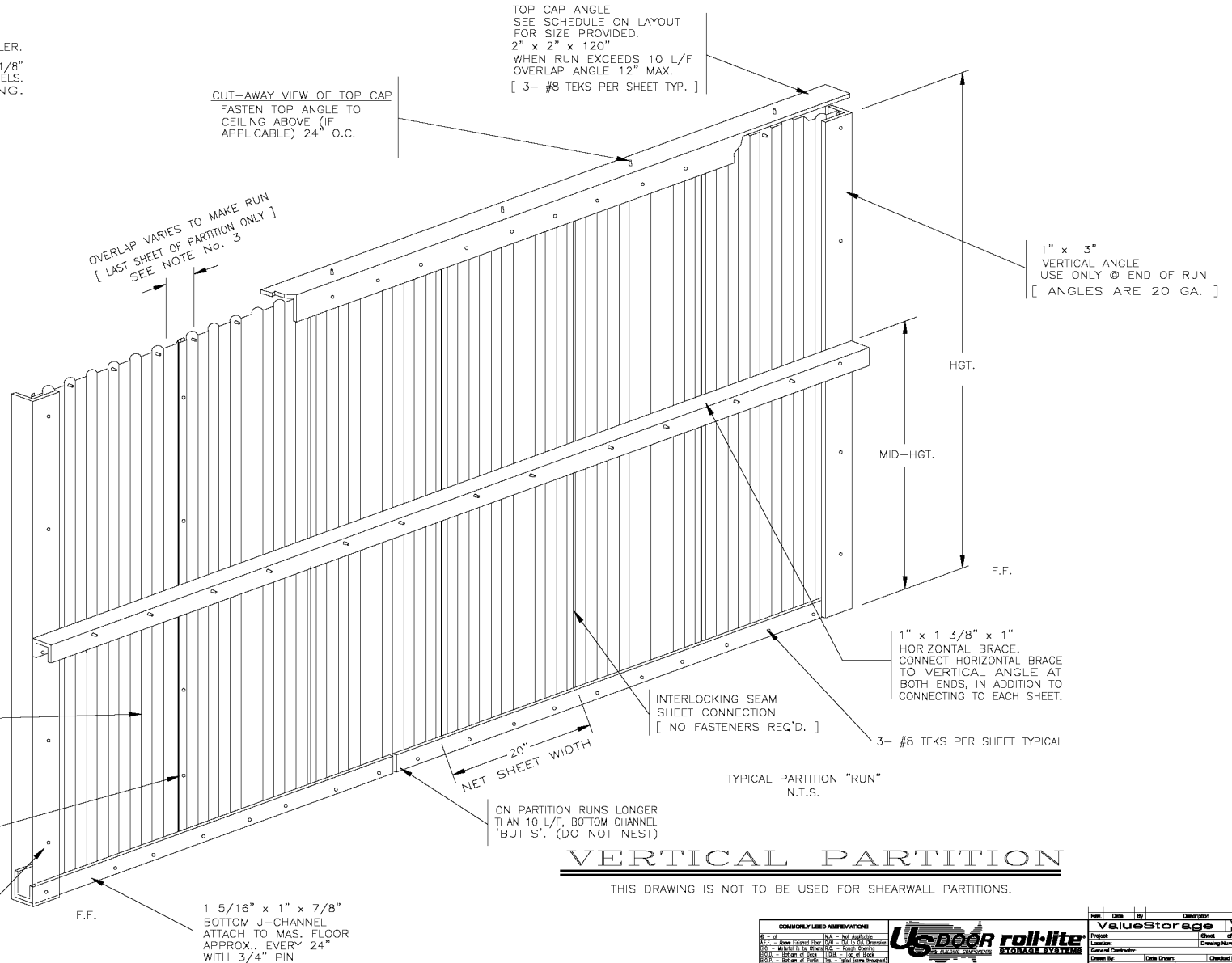
1 PARTITION TO HALL PANEL CONNECTION PLAN VIEW
D14



SOME RUNS REQUIRE LAST SHEET TO BE A HALF SHEET. SCORED SHEETS MUST BE BROKEN IN TWO PIECES TO MAKE HALF SHTS. BALANCE OF SHEET SHOULD BE USED ON NEXT RUN. NOTE: SOME CONDITIONS REQUIRE LAST SHEET TO BE FIELD CUT.

#8 TEK SCREWS AT SHEET OVERLAP 20" O.C. LAST SHEET OF RUN ONLY. INSTALL VINYL COVERS ON ALL EXPOSED SCREW TIPS.

1" x 3" VERTICAL ANGLE USE ONLY @ END OF RUN [ANGLES ARE 20 GA.]



VERTICAL PARTITION

THIS DRAWING IS NOT TO BE USED FOR SHEARWALL PARTITIONS.

COMMONLY USED ABBREVIATIONS		ValueStorage	
1/2" = 1/2"	1/4" = 1/4"	Project	Sheet of
3/4" = 3/4"	1/2" = 1/2"	Location	Drawing Number
1" = 1"	1/2" = 1/2"	General Contractor	
1 1/2" = 1 1/2"	1/2" = 1/2"	Drawn By	Date Drawn
2" = 2"	1/2" = 1/2"	Approved By	Date Approved
3" = 3"	1/2" = 1/2"	This drawing is for use to support US Door partitions, any other use is strictly prohibited.	